

Road Shoulder Hazards along
Shadowbend Place– January 2015

Hazards on road shoulders, that could pose a risk to cyclists, were identified in January 2015 by volunteers from Bike The Woodlands Coalition.

The interpretation of what constitutes a serious hazard is subjective, and may vary between volunteers.

Definition of hazard types:

1. **Lip:** Lip protruding for several feet at least 1 inch above adjacent pavement
2. **Gap:** Gap extending for several feet, in which bike tire could fall into
3. **Pothole:** hole that should be filled
4. **Rough area:** excessively rough area the should be fixed
5. **Maintenance:** not a danger to cyclists but something the county might want to be aware of
6. **Other:** items that don't fall into the above

Severity ratings

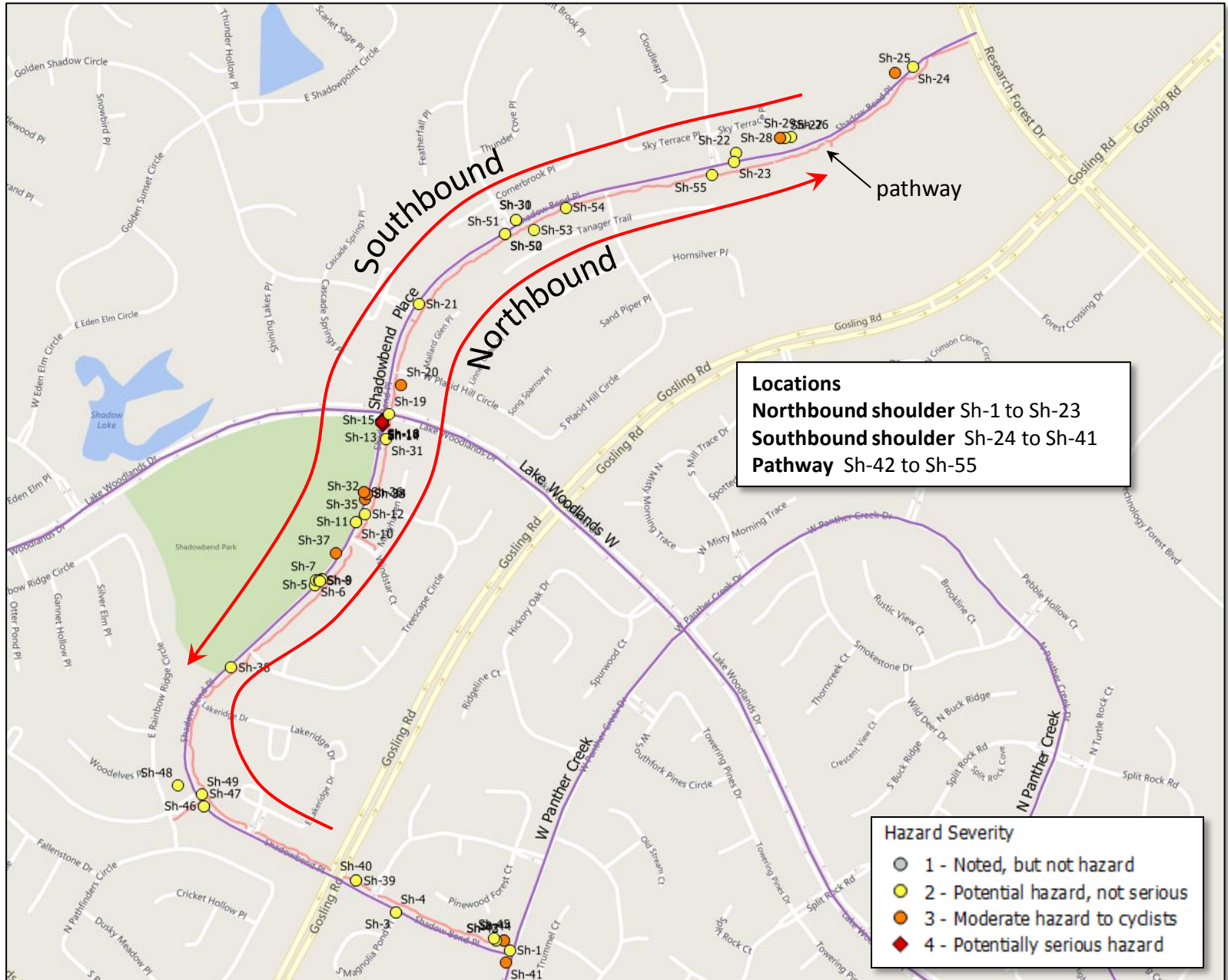
- **Level 4** - A serious and immediate danger to cyclists
- **Level 3** - should be fixed soon; could be a danger
- **Level 2** - Potential hazard to note, but not very serious
- **Level 1** - Not hazard to cyclists, but something that the county might want to be aware of

Hazards by road

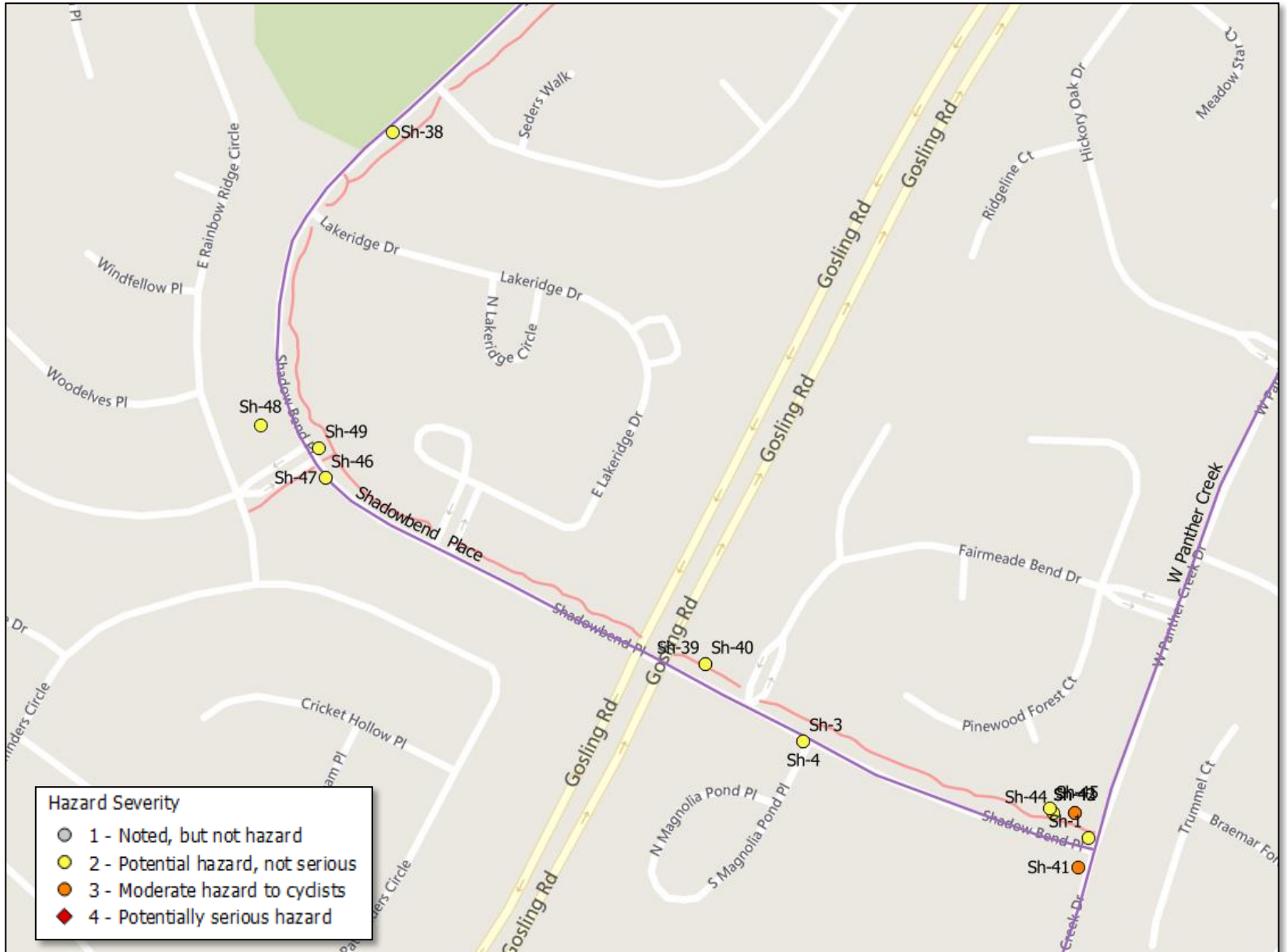
	Distance, mi	Hazard level:				Total
		1	2	3	4	
Branch Crossing	3.51	1	5	4	1	11
Cochrans Crossing	3.26		2	9	8	19
Flintridge	3.46		5	5	7	17
Lake Woodlands	6.08	8	7	18	6	39
North Panther Creek	1.25		1	3	4	8
Shadowbend	1.86	1	24	12	6	43
Shadowbend pathway	2.61		12	1		13
Sterling Ridge	1.86		3			3
Terramount	2.31		1	2		3
West Panther Creek	0.98			12	1	13
Woodlands Parkway (West)	2.61		7			7
Woodlands Parkway pathway	0.94		1	2	1	4
	30.73	10	68	68	34	180

Distance is distance surveyed.

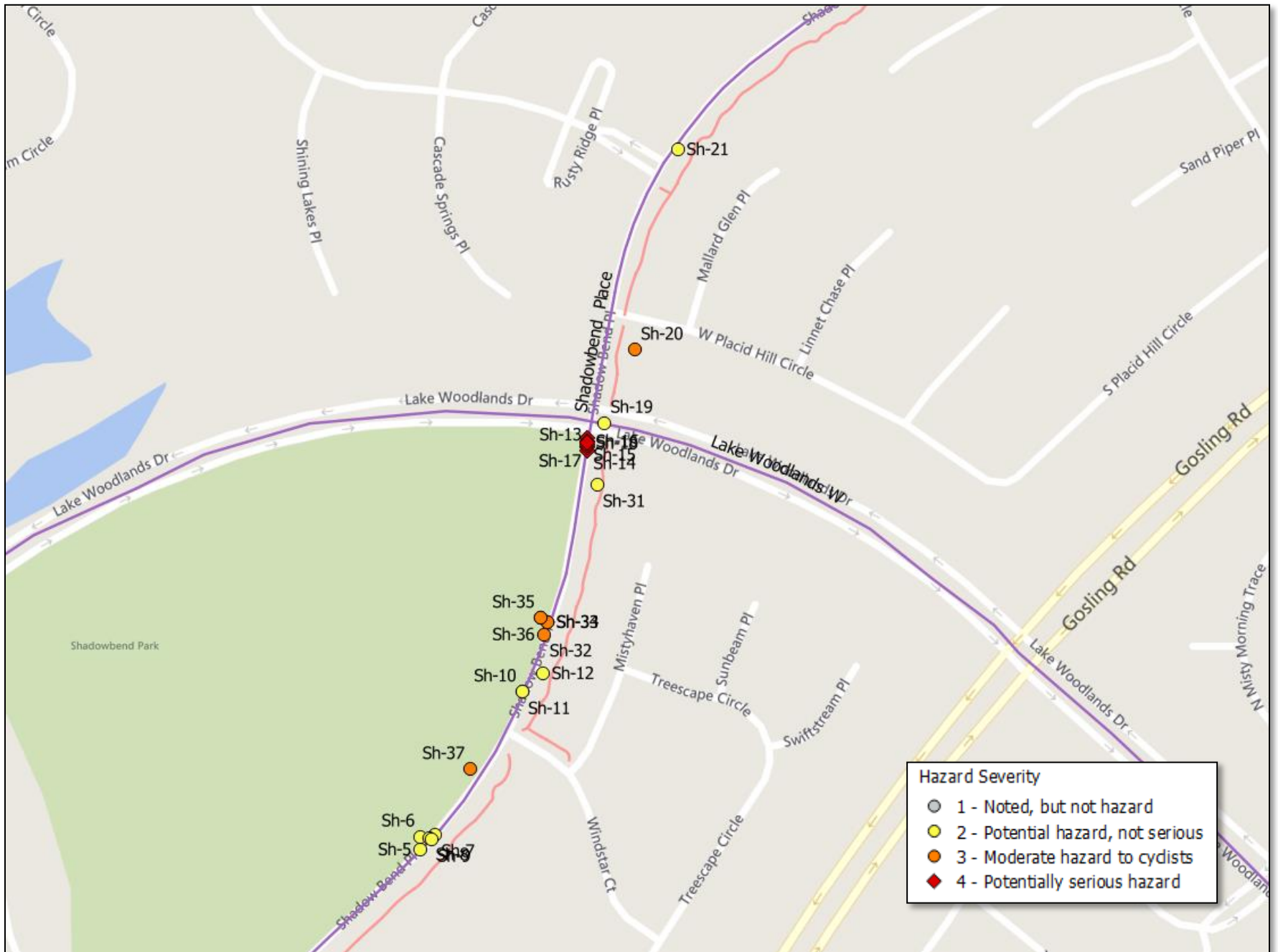
Shadowbend Hazard Locations



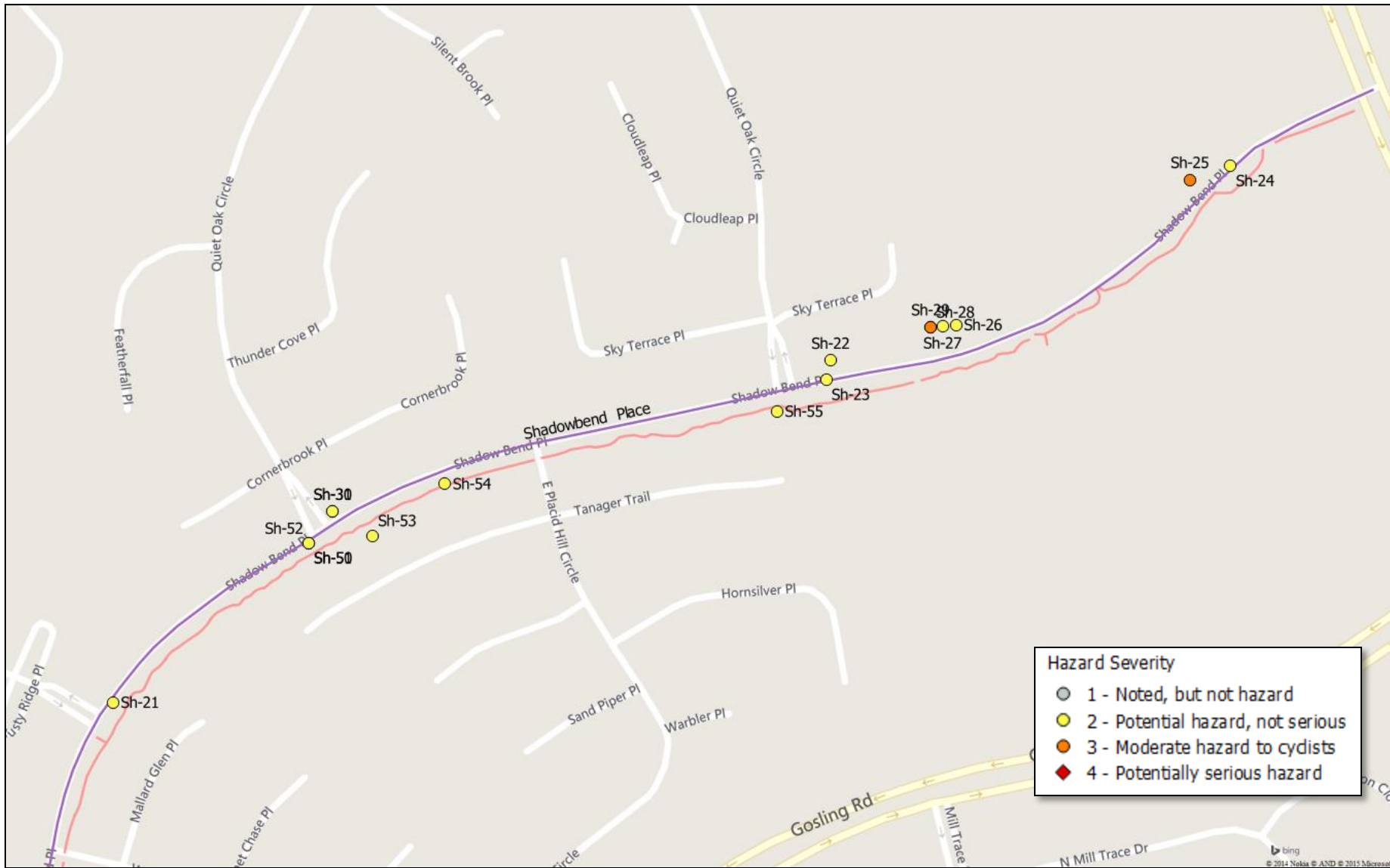
Shadowbend Hazards – detail on southern end



Shadowbend Hazards – detail on central section



Shadowbend Hazards – detail in northern section



Location Sh-1
Shadowbend
Northbound

Hazard Type: Rough Area Rough, water-collection area at intersection
Severity: 2



WP_20141229_001

Location Sh-2
Shadowbend
Northbound

Hazard Type: Other
Severity: 0

Four legged pedestrian use - no hazard just
interest.



WP_20141229_003

WP_20141229_003.jpg

Location Sh-3
Shadowbend
Northbound

Hazard Type: Maintenance
Severity: 2

Could cause cyclist to move onto the roadway.



WP_20141229_005

WP_20141229_005.jpg

Location Sh-4
Shadowbend
Northbound

Hazard Type: Maintenance
Severity: 2

Could cause cyclist to move onto the roadway.



WP_20141229_006

Location Sh-5
Shadowbend
Northbound

Hazard Type: Pothole
Severity: 2

Half Inch Deep Irregular Hole in Middle of
Shoulder - Photo 1



WP_20141230_008

WP_20141230_008.jpg

Location Sh-6
Shadowbend
Northbound

Hazard Type: Pothole
Severity: 2

Half Inch Deep Irregular Hole in Middle of
Shoulder-Photo 2



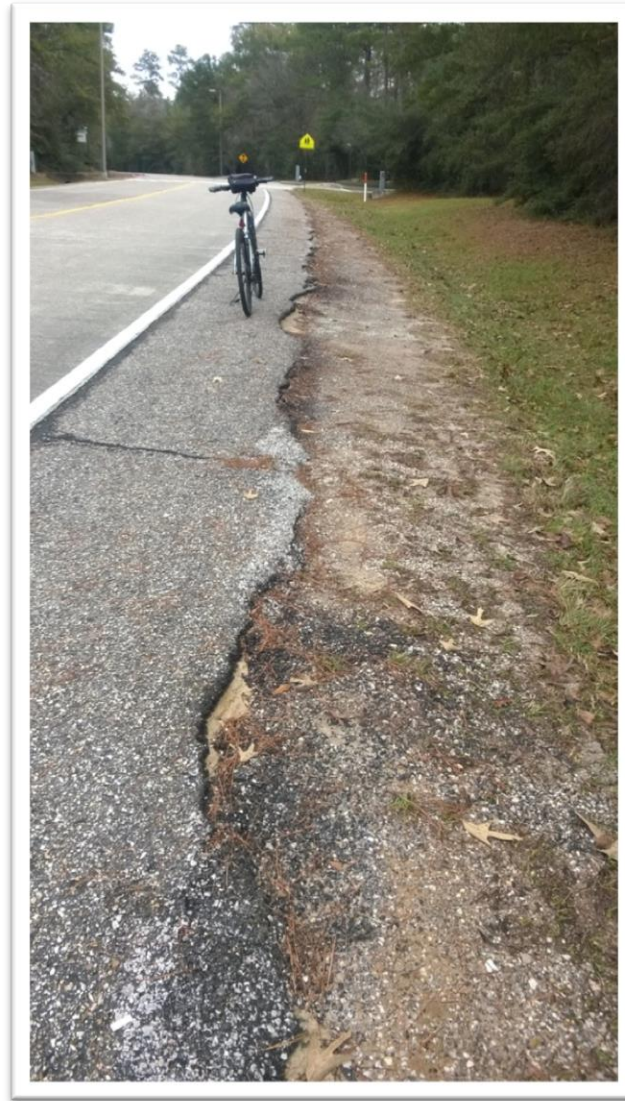
WP_20141230_009

WP_20141230_009.jpg

Location Sh-7
Shadowbend
Northbound

Hazard Type: Other
Severity: 2

Degraded Shoulder Edge 2" Dropoff
Locations for photos Sh-5 to Sh-10 are
within this shoulder section

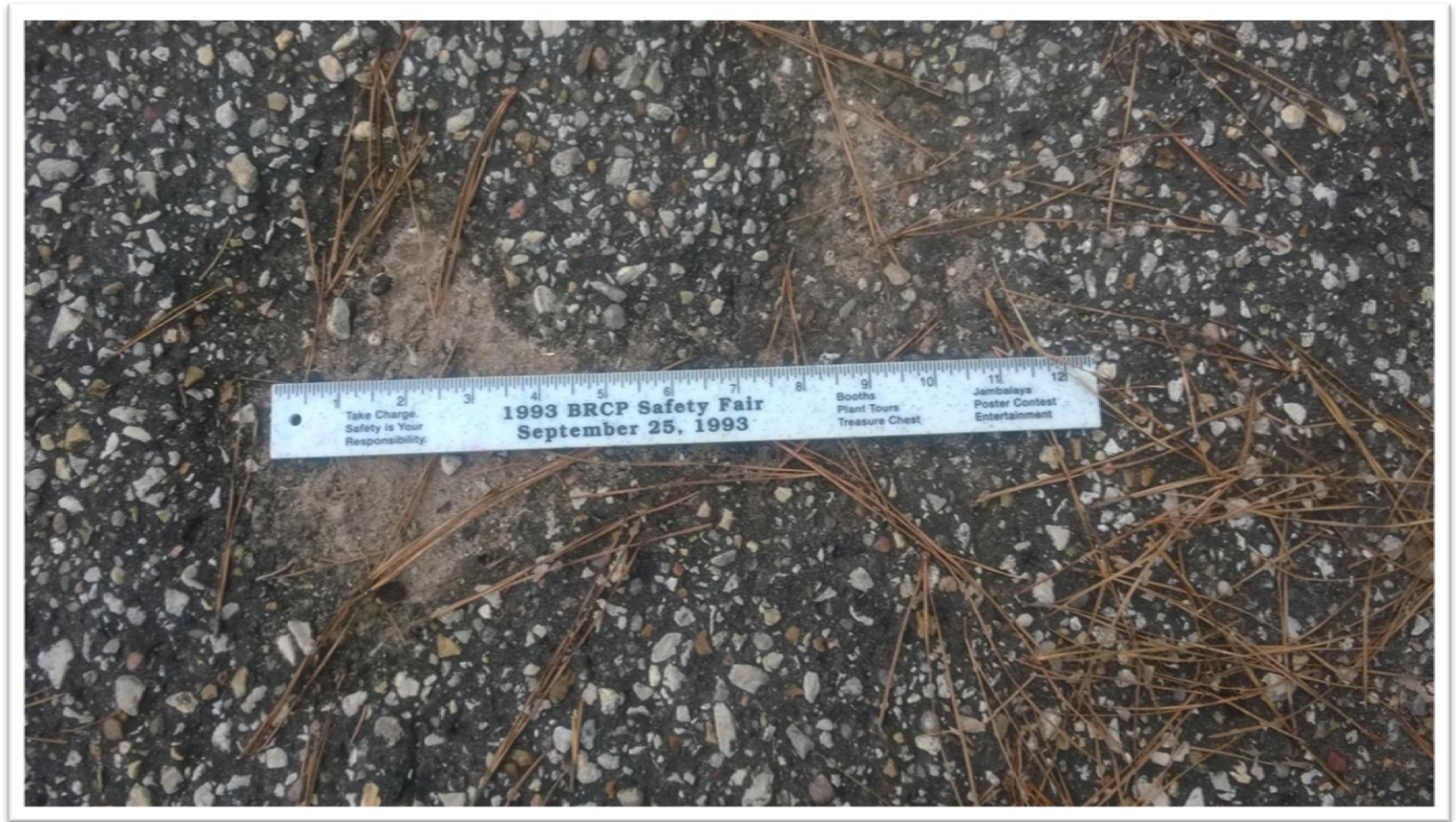


WP_20141230_010

Location Sh-8
Shadowbend
Northbound

Hazard Type: Pothole
Severity: 2

Half Inch Deep Irregular Hole in Middle of
Shoulder Shown with Ruler Photo 3



WP_20141231_001

WP_20141231_001.jpg

Location Sh-9
Shadowbend
Northbound

Hazard Type: Rough Area Subsidence with Ruler
Severity: 2



WP_20141231_002

WP_20141231_002.jpg

Location Sh-10
Shadowbend
Northbound

Hazard Type: Rough Area Hole near Sewer Drop with Ruler
Severity: 2



WP_20141231_004

WP_20141231_004.jpg

Location Sh-11
Shadowbend
Northbound

Hazard Type: Pothole
Severity: 2

Two 0.5 inch deep holes in shoulder plus gaps
Photo 2



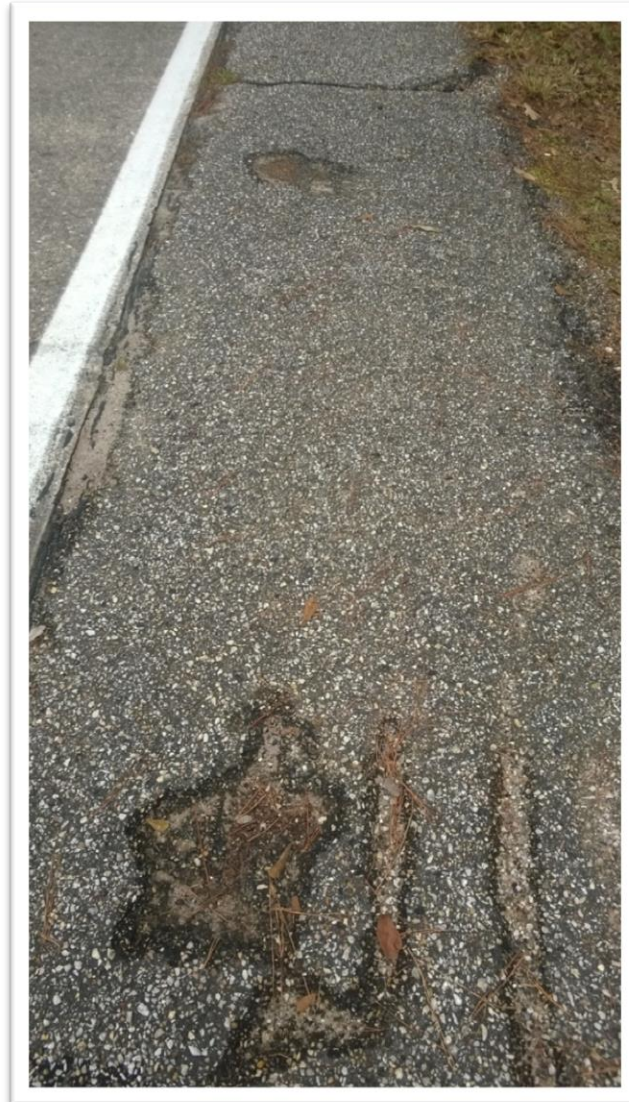
WP_20141231_003

WP_20141231_003.jpg

Location Sh-12
Shadowbend
Northbound

Hazard Type: Pothole
Severity: 2

Two 0.5 inch deep holes in shoulder plus gaps
Photo 1



WP_20141230_011

WP_20141230_011.jpg

Location Sh-13
Shadowbend
Northbound

Hazard Type: Pothole
Severity: 4

3.5" drop from road surface to shoulder at
intersection with LW Photo 1



WP_20141230_012

WP_20141230_012.jpg

Location Sh-14
Shadowbend
Northbound

Hazard Type: Pothole
Severity: 4

3.5" drop from road surface to shoulder at
intersection with LW-Photo 2



WP_20141230_013

WP_20141230_013.jpg

Location Sh-15
Shadowbend
Northbound

Hazard Type: Pothole
Severity: 4

3.5" drop from road surface to shoulder at
intersection with LW-Photo3



WP_20141230_014

WP_20141230_014.jpg

Location Sh-16
Shadowbend
Northbound

Hazard Type: Pothole
Severity: 4

3.5" drop from road surface to shoulder at
intersection with LW-Photo4



WP_20141230_015

WP_20141230_015.jpg

Location Sh-17
Shadowbend
Northbound

Hazard Type: Pothole
Severity: 4

3.5" drop from road surface to shoulder at
intersection with LW-Photo 5



WP_20141230_017

WP_20141230_017.jpg

Location Sh-18
Shadowbend
Northbound

Hazard Type: Pothole
Severity: 4

3.5" drop from road surface to shoulder at
intersection with LW-Photo 6



WP_20141230_018

WP_20141230_018.jpg

Location Sh-19
Shadowbend
Northbound

Hazard Type: Other
Severity: 2

Intersection Traffic Control Studs



WP_20141231_009

WP_20141231_009.jpg

Location Sh-20
Shadowbend
Northbound

Hazard Type: Lip
Severity: 3

Eroded Section from Roadway 1.5" deep-
Photo 1



WP_20141230_019

WP_20141230_019.jpg

Location Sh-21
Shadowbend
Northbound

Hazard Type: Other
Severity: 2

Overlay Patch 1" thick



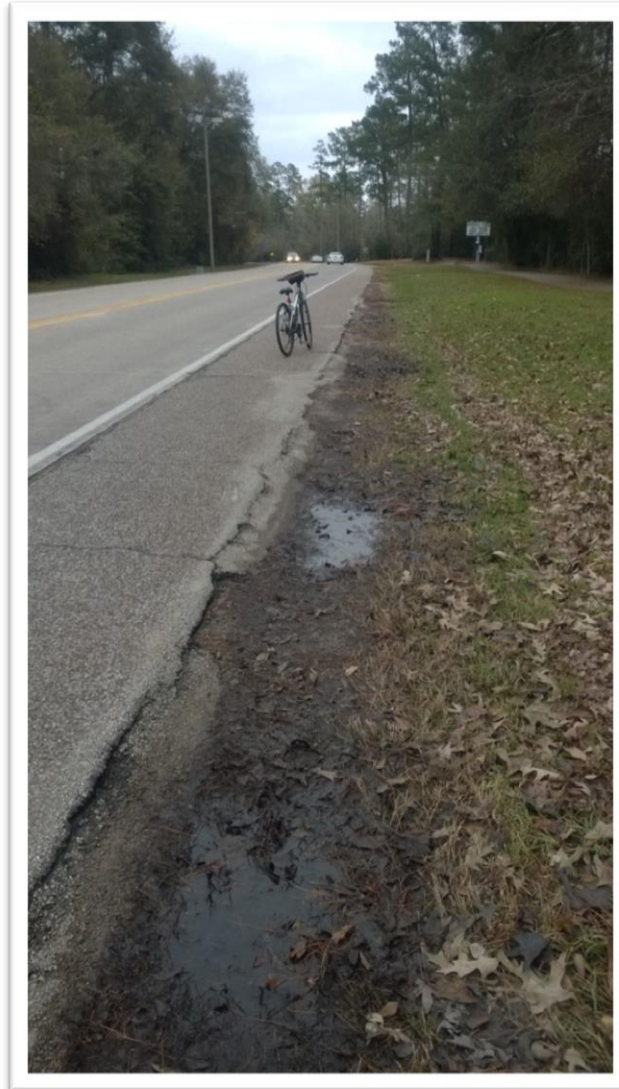
WP_20141230_021

WP_20141230_021.jpg

Location Sh-22
Shadowbend
Northbound

Hazard Type: Maintenance
Severity: 2

Degraded shoulder edge due to car parking
near Collins Intermediate School



WP_20141230_022

Location Sh-23
Shadowbend
Northbound

Hazard Type: Pothole
Severity: 2

Hole on edge of shoulder 1" deep



WP_20141230_023

WP_20141230_023.jpg

Location Sh-24
Shadowbend
Southbound

Hazard Type: Rough Area Rough surface north of Brickman entrance
Severity: 2



WP_20141230_024

Location Sh-25
Shadowbend
Southbound

Hazard Type: Other
Severity: 3

Overgrown shoulder forces cyclist to road



WP_20141230_025

Location Sh-26
Shadowbend
Southbound

Hazard Type: Rough Area Sewer drop shoulder subsidence
Severity: 2



WP_20141230_026

WP_20141230_026.jpg

Location Sh-27
Shadowbend
Southbound

Hazard Type: Other
Severity: 2

Sewer Structure 1" above shoulder



WP_20141230_027

WP_20141230_027.jpg

Location Sh-28
Shadowbend
Southbound

Hazard Type: Gap
Severity: 3

40' 1" gap on shoulder - photo 1



WP_20141230_028

WP_20141230_028.jpg

Location Sh-29
Shadowbend
Southbound

Hazard Type: Gap
Severity: 3

40' 1" gap on shoulder - photo 2



WP_20141230_029

Location Sh-30
Shadowbend
Southbound

Hazard Type: Other
Severity: 2

Subsidence gap Turnstone Entrance from
Shadowbend- photo 1



WP_20141230_030

WP_20141230_030.jpg

Location Sh-31
Shadowbend
Southbound

Hazard Type: Other
Severity: 2

Subsidence gap - Turnstone Entrance from
Shadowbend photo 2



WP_20141230_031

WP_20141230_031.jpg

Location Sh-31a
Shadowbend
Southbound

Hazard Type: Other
Severity: 2

Degraded Edge near Intersection with LW



WP_20141230_001

WP_20141230_001.jpg

Location Sh-32
Shadowbend
Southbound

Hazard Type: Other
Severity: 3

2" drop off from Impact Celebration Church
Driveway to Degraded Shoulder - Photo 1



WP_20141230_003

WP_20141230_003.jpg

Location Sh-33
Shadowbend
Southbound

Hazard Type: Other
Severity: 3

2" drop off from Impact Celebration Church
Driveway to Degraded Shoulder - Photo 2



WP_20141231_005

WP_20141231_005.jpg

Location Sh-34
Shadowbend
Southbound

Hazard Type: Other
Severity: 3

2" drop off from Impact Celebration Church
Driveway to Degraded Shoulder - Photo 3



WP_20141231_006

WP_20141231_006.jpg

Location Sh-35
Shadowbend
Southbound

Hazard Type: Other
Severity: 3

2" drop off from Impact Celebration Church
Driveway to Degraded Shoulder - Photo 4



WP_20141231_007

WP_20141231_007.jpg

Location Sh-36
Shadowbend
Southbound

Hazard Type: Other
Severity: 3

2" drop off from Impact Celebration Church
Driveway to Degraded Shoulder - Photo 5



WP_20141231_008

WP_20141231_008.jpg

Location Sh-37
Shadowbend
Southbound

Hazard Type: Other
Severity: 3

Crumbling Shoulder



WP_20141230_004

WP_20141230_004.jpg

Location Sh-38
Shadowbend
Southbound

Hazard Type: Other
Severity: 2

Narrowed Degraded Shoulder



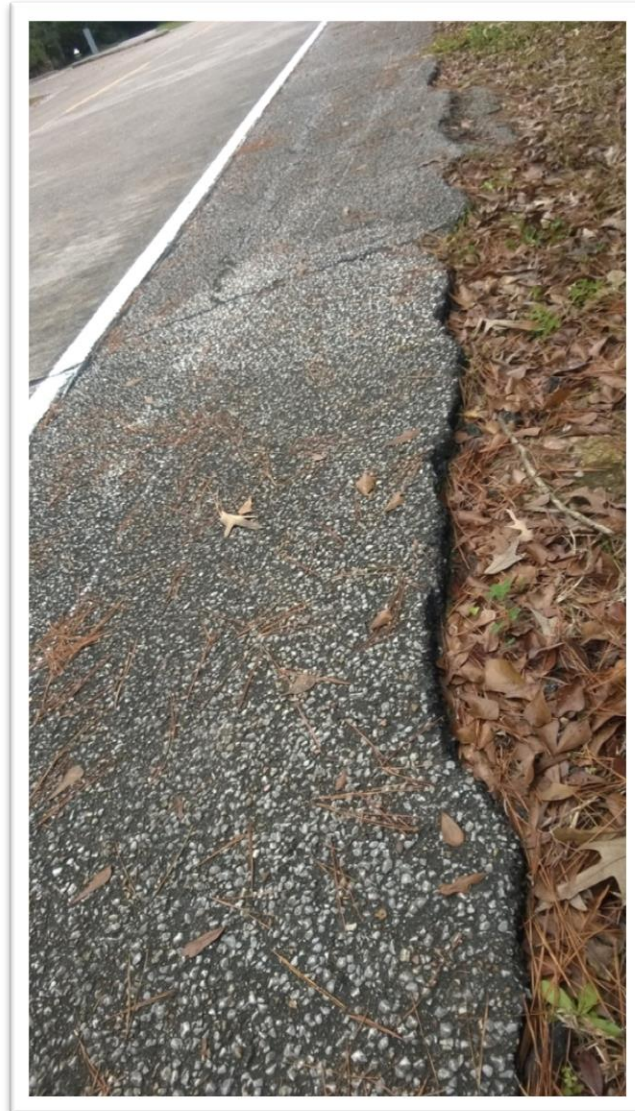
WP_20141230_007

WP_20141230_007.jpg

Location Sh-39
Shadowbend
Southbound

Hazard Type: Other
Severity: 2

Three inch drop off



WP_20141229_024

Location Sh-40
Shadowbend
Southbound

Hazard Type: Other
Severity: 2

Three inch drop off
and degradation
along the outer
shoulder edge

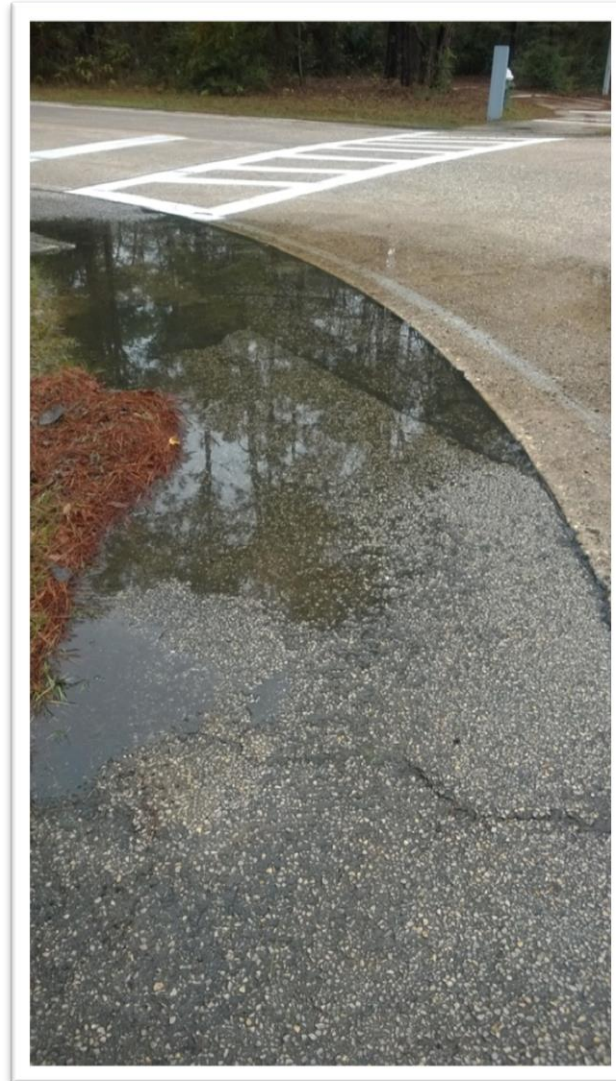


WP_20141229_025

Location Sh-41
Shadowbend
Southbound

Hazard Type: Maintenance
Severity: 3

Subsided hard surface that collects water at
intersection



WP_20141229_010

Location Sh-42
Shadowbend
pathway

Hazard Type: Other
Severity: 3

2" elevation change between sections at
School Crossing - Photo 1



WP_20150102_001

WP_20150102_001.jpg

Location Sh-43
Shadowbend
pathway

Hazard Type: Other
Severity: 3

2" elevation change between sections at
School Crossing - Photo 2



WP_20150102_002

Location Sh-44
Shadowbend
pathway

Hazard Type: Rough Area
Severity: 2

Rough, water collecting area at intersection -
Photo 1



WP_20150102_003

WP_20150102_003.jpg

Location Sh-45
Shadowbend
pathway

Hazard Type: Rough Area
Severity: 2

Rough, water collecting area at intersection -
Photo-2



WP_20150102_004

WP_20150102_004.jpg

Location Sh-46
Shadowbend
pathway

Hazard Type: Pothole
Severity: 2

Divot with Exposed Metal Bolt - Photo 1



WP_20150102_005

WP_20150102_005.jpg

Location Sh-47
Shadowbend
pathway

Hazard Type: Pothole
Severity: 2

Divot with Exposed Metal Bolt - Photo 2



WP_20150102_007

WP_20150102_007.jpg

Location Sh-48
Shadowbend
pathway

Hazard Type: Pothole
Severity: 2

Divot - Photo 1



WP_20150102_008

WP_20150102_008.jpg

Location Sh-49
Shadowbend
pathway

Hazard Type: Pothole
Severity: 2

Divot - Photo 2



WP_20150102_009

WP_20150102_009.jpg

Location Sh-50
Shadowbend
pathway

Hazard Type: Gap
Severity: 2

Open Seam and Cracked Section Corner
Photo 1



WP_20150102_010

WP_20150102_010.jpg

Location Sh-51
Shadowbend
pathway

Hazard Type: Gap
Severity: 2

Open Seam and Cracked Section Corner
Photo 2



WP_20150102_011

WP_20150102_011.jpg

Location Sh-52
Shadowbend
pathway

Hazard Type: Gap
Severity: 2

Open Seam and Cracked Section Corner
Photo 3



WP_20150102_012

WP_20150102_012.jpg

Location Sh-53
Shadowbend
pathway

Hazard Type: Other
Severity: 2

2" Drop Between Sections



WP_20150102_013

Location Sh-54
Shadowbend
pathway

Hazard Type: Pothole
Severity: 2

Divot with Exposed Metal Rod



WP_20150102_014

WP_20150102_014.jpg

Location Sh-55
Shadowbend
pathway

Hazard Type: Gap
Severity: 2

2' Crack at Section Edge



WP_20150102_015