

Road Shoulder Hazards along
Cochrans Crossing – January 2015

Hazards on road shoulders, that could pose a risk to cyclists, were identified in January 2015 by volunteers from Bike The Woodlands Coalition.

The interpretation of what constitutes a serious hazard is subjective, and may vary between volunteers.

Definition of hazard types:

1. **Lip:** lip protruding for several feet at least 1 inch above adjacent pavement
2. **Gap:** gap extending for several feet, in which bike tire could fall into
3. **Pothole:** hole that should be filled
4. **Rough area:** excessively rough area the should be fixed
5. **Maintenance:** not a danger to cyclists but something the county might want to be aware of
6. **Other:** items that don't fall into the above

Severity ratings

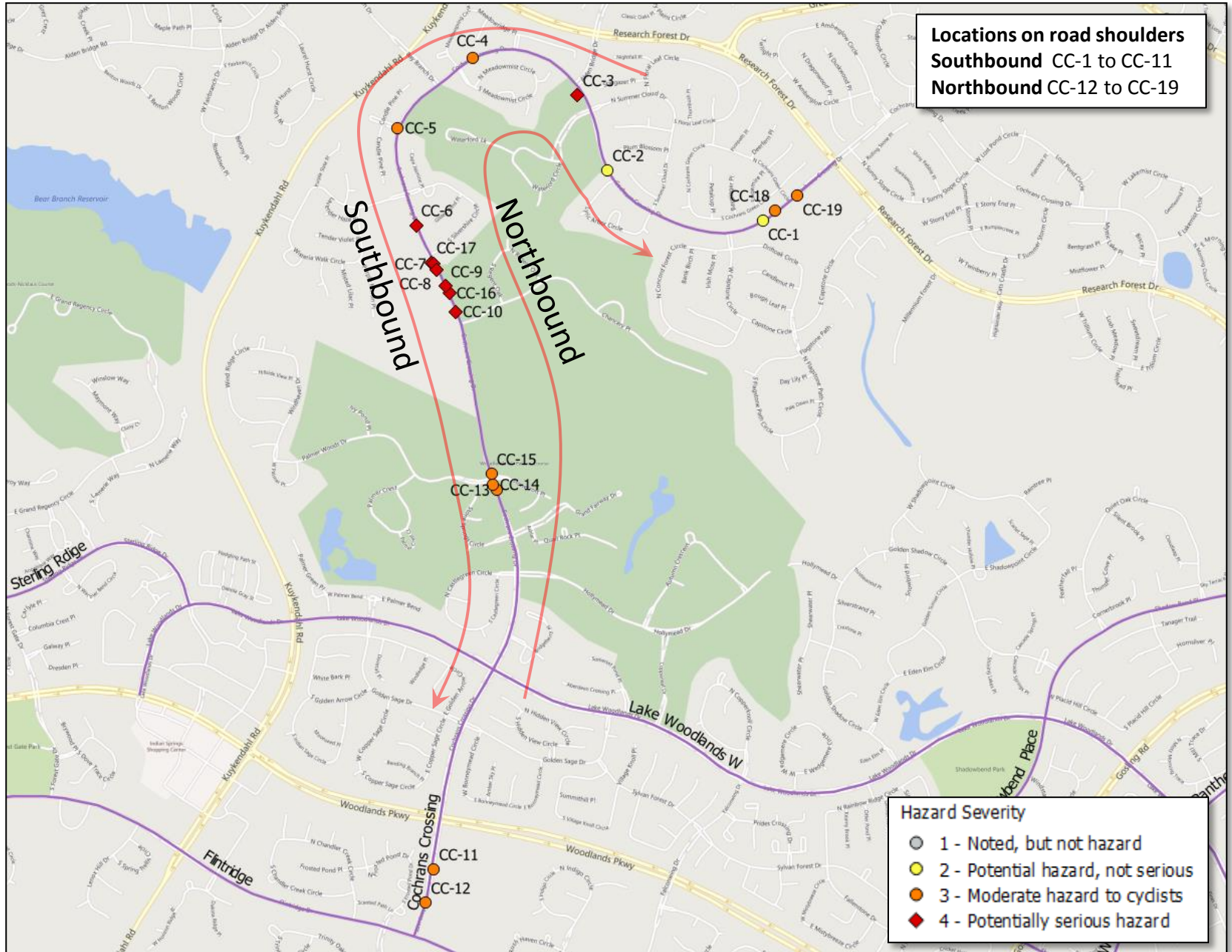
- **Level 4** - A serious and immediate danger to cyclists
- **Level 3** - Should be fixed soon; could be a danger
- **Level 2** - Potential hazard to note, but not very serious
- **Level 1** - Not hazard to cyclists, but something that the county might want to be aware of

Hazards by road

	Distance, mi	Hazard level:				Total
		1	2	3	4	
Branch Crossing	3.51	1	5	4	1	11
Cochrans Crossing	3.26		2	9	8	19
Flintridge	3.46		5	5	7	17
Lake Woodlands	6.08	8	7	18	6	39
North Panther Creek	1.25		1	3	4	8
Shadowbend	1.86	1	24	12	6	43
Shadowbend pathway	2.61		12	1		13
Sterling Ridge	1.86		3			3
Terramount	2.31		1	2		3
West Panther Creek	0.98			12	1	13
Woodlands Parkway (West)	2.61		7			7
Woodlands Parkway pathway	0.94		1	2	1	4
	30.73	10	68	68	34	180

Distance is distance surveyed.

Cochrans Crossing Hazard Locations



Location CC-1
Cochrans Crossing

Southbound
Severity: 2

Dumped paving materials



IMG_3660

Location CC-2
Cochrans Crossing
Southbound

Hazard Type: Rough Area Bad shoulder patch
Severity: 2



IMG_3662

Location CC-3
Cochrans Crossing
Southbound

Hazard Type: Lip
Severity: 4

Lip 1" to 2" next to manhole cover with rough area; note that many of the manhole covers and their concrete structures are not level with shoulder.



IMG_3664

Location CC-4
Cochrans Crossing
Southbound

Hazard Type: Gap
Severity: 3

Shoulder cracked and collapsing into ditch



IMG_3665

Location CC-5
Cochrans Crossing
Southbound

Hazard Type: Lip

Lip drop off at crossing of Spiral Leaf



IMG_3666

Location CC-6
Cochrans Crossing
Southbound

Hazard Type: Rough Area
Severity: 4

Very bad shoulder in front of church and elementary school which has been possibly marked for repair



IMG_3668

Location CC-7
Cochrans Crossing
Southbound

Hazard Type: Lip
Severity: 4

Lip at manhole structure at Galatas
Elementary entrance



IMG_3577

Location CC-8
Cochrans Crossing
Southbound

Hazard Type: Lip
Severity: 4

2" lip hidden with vegetation; possibly
marked for repair



IMG_3578

Location CC-9
Cochrans Crossing
Southbound

Hazard Type: Lip
Severity: 4

120 feet of bad shoulder repair with manhole hazard, uneven shoulder surface, and drop off into ditch



IMG_3579

Location CC-10
Cochrans Crossing
Southbound

Hazard Type: Lip
Severity: 4

Manhole structure with 2" to 3" lip and edge hazard; has been patched but only marginally reduces hazard.



IMG_3581

Location CC-11
Cochrans Crossing
Northbound

Hazard Type: Gap
Severity: 3

2" gap at entrance to Lower School at John
Cooper School



IMG_3674

Location CC-12
Cochrans Crossing
Southbound

Hazard Type: Rough Area
Severity: 3

Drop off of outer shoulder edge from erosion
and ground subsidence; drop of 3" to 4"



IMG_3680

Location CC-13
Cochrans Crossing
Northbound

Hazard Type: Gap
Severity: 3

Ridge along gap for 100 ft and more



IMG_3564

Location CC-14
Cochrans Crossing
Northbound

Hazard Type: Gap
Severity: 3

Gap 2.5 inches varying in width and depth



IMG_3567

Location CC-15
Cochrans Crossing
Northbound

Hazard Type: Rough Area
Severity: 3

Grass overgrown covering shoulder next to
wide gap



IMG_3571

Location CC-16
Cochrans Crossing
Northbound

Hazard Type: Rough Area 120 feet of bad shoulder repair
Severity: 4



IMG_3574

Location CC-17
Cochrans Crossing
Northbound

Hazard Type: Gap
Severity: 4

Large gap 2" plus across from school, church,
and park. NOTE: some of this near the school
and church has been marked with orange
paint, possibly for repair



IMG_3576

Location CC-18
Cochrans Crossing
Northbound

Hazard Type: Pothole
Severity: 3

Crumbling shoulder leaving pothole on edge
of shoulder



IMG_3656

Location CC-19
Cochrans Crossing
Northbound

Hazard Type: Rough Area Crumbling, collapsing shoulder
Severity: 3



IMG_3657